

SETON

RECREATION FACILITY

18150 56 St. S.E.

A recreational, leisure, sports, arts and cultural facility.



Concept design revealed:
SUMMER 2013*
Construction begins:
WINTER 2015*
Grand opening:
SUMMER 2017*

PROPOSED AMENITIES

Aquatics

- 52m, 10 lane competition pool
- Dive tank
- Spectator viewing area
- Leisure pool – wave system, water slides
- Hot tubs/steam room

Multi-Purpose Rooms

- Large and small rooms for use as studios, classrooms and meeting spaces

Library

- 25,000 sq. ft. full service library

Youth Centre

- Dedicated space for youth activities and programs

Ice

- 2 multi-purpose rinks

Gymnasiums

- 3 full courts with multi-purpose flooring

Arts

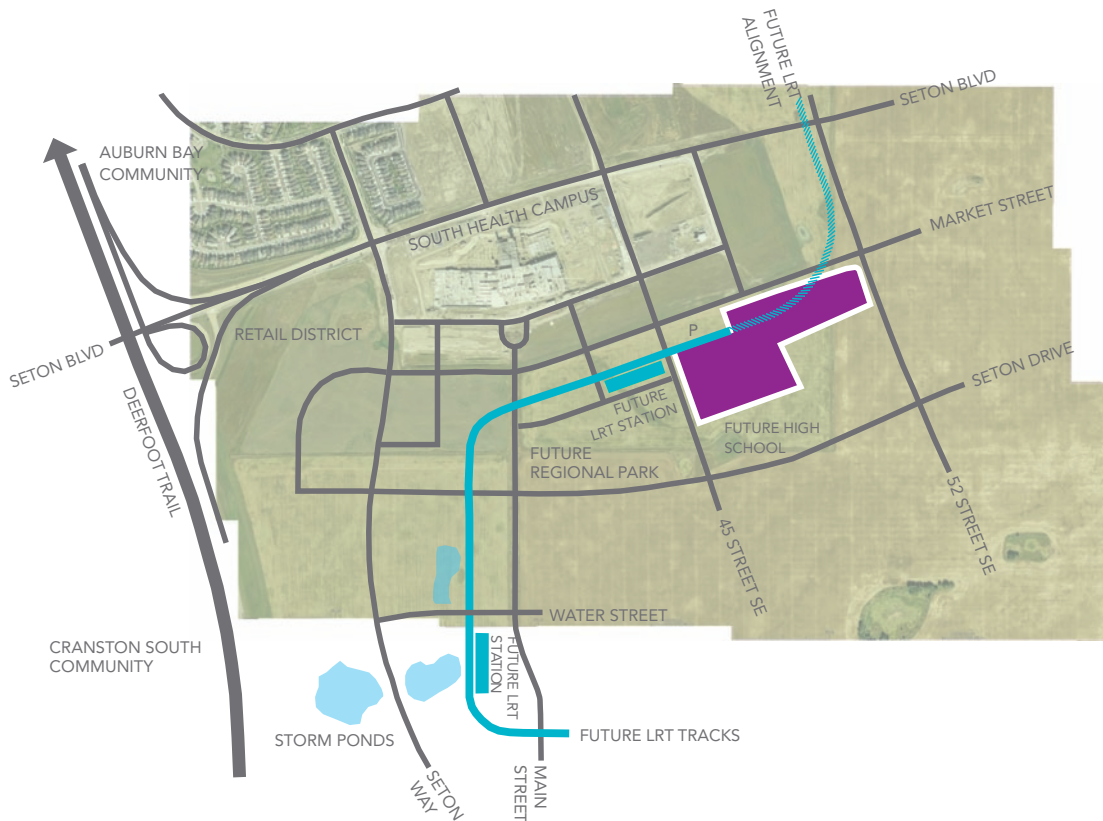
- Art making, studio and gallery space
- 300 seat theatre (approximate)

Fitness Centre

- Cardio and strength training equipment
- Fitness/aerobics studios
- Running/walking track

Retail/Commercial

- Day care/child minding
- Food services
- Physiotherapy/medical clinic
- Pro shop



- 20 acre (8.4 hectare)
- Estimated building size*: 330,000 sq. ft.

* Dates and building size are approximate and subject to change.

For more information go to calgary.ca and search *New Recreation Centres*

calgary.ca | call 3-1-1

QUARRY PARK

RECREATION FACILITY 108 Quarry Park Rd. S.E.

A recreational and leisure facility for the surrounding communities.



Schematic design revealed:
SPRING 2013*
Construction begins:
SUMMER 2013*
Grand opening:
SPRING 2015*

PROPOSED AMENITIES

Aquatics

- 25m, 6 lanes
- Small leisure pool
- Hot tubs/steam room

Gymnasiums

- 1 court with multi-purpose flooring

Fitness Centre

- Cardio and strength training equipment
- Fitness/aerobics studios
- Running/walking track

Multi-Purpose Rooms

- Large and small rooms for use as studios, classrooms and meeting spaces

Library

- Relocation of Glenmore Square Library
- 7,500 sq. ft. full service library

Retail/Commercial

- Daycare/child minding
- Food services



- 16.5 acre (6.6 hectare)
- Estimated building size*: 100,000 sq. ft.

* Dates and building size are approximate and subject to change.

For more information go to calgary.ca and search *New Recreation Centres*

calgary.ca | call 3-1-1

GREAT PLAINS

RECREATION FACILITY

5749 76 Ave. S.E.

A competitive tournament facility for ice programs and activities.



Concept design revealed:
SPRING 2013*
Construction begins:
FALL 2013*
Grand opening:
WINTER 2015*

PROPOSED AMENITIES

Ice

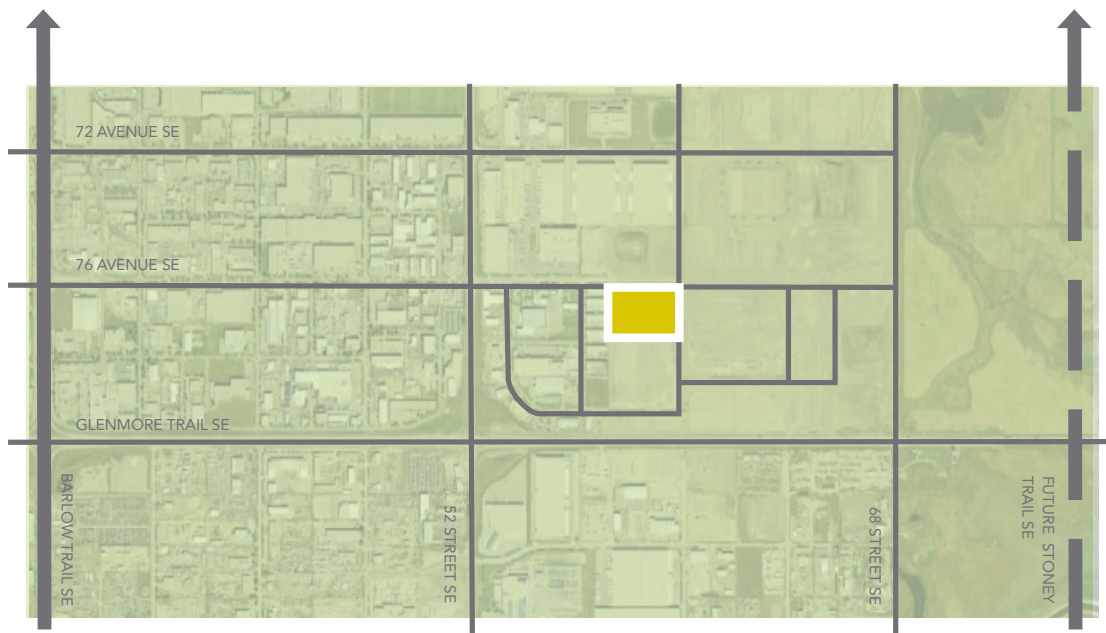
- 2 multi-purpose rinks
- One rink with enhanced spectator seating

Multi-Purpose Rooms

- Large and small rooms for use as fitness centre, studios, classrooms and meeting spaces

Retail/Commercial

- Food services
- Pro shop (skate sharpening)



- 12.4 acre (5 hectare)
- Estimated building size*: 85,000 sq. ft.

* Dates and building size are approximate and subject to change.

For more information go to calgary.ca and search *New Recreation Centres*

calgary.ca | call 3-1-1

ROCKY RIDGE

RECREATION FACILITY 11300 Rocky Ridge Rd. N.W.

A recreational, leisure, sports, arts and cultural facility.



Schematic design revealed:
SPRING 2013*
Construction begins:
SPRING 2014*
Grand opening:
FALL 2016*

PROPOSED AMENITIES

Aquatics

- 25m, 8 lane competition pool
- Spectator viewing area
- Leisure pool – wave system, water slides
- Hot tubs/steam room

Ice

- 1 multi-purpose rink
- 1 leisure ice rink

Gymnasiums

- 3 full courts with multi-purpose flooring

Fitness Centre

- Cardio and strength training equipment
- Fitness/aerobics studios
- Running/walking track

Multi-Purpose Rooms

- Large and small rooms for use as studios, classrooms and meeting spaces.

Library

- 3,000 sq. ft. self-service library
- Access to print and digital materials, hold pickup, public seating and study space
- Supported by Crowfoot Library

Arts

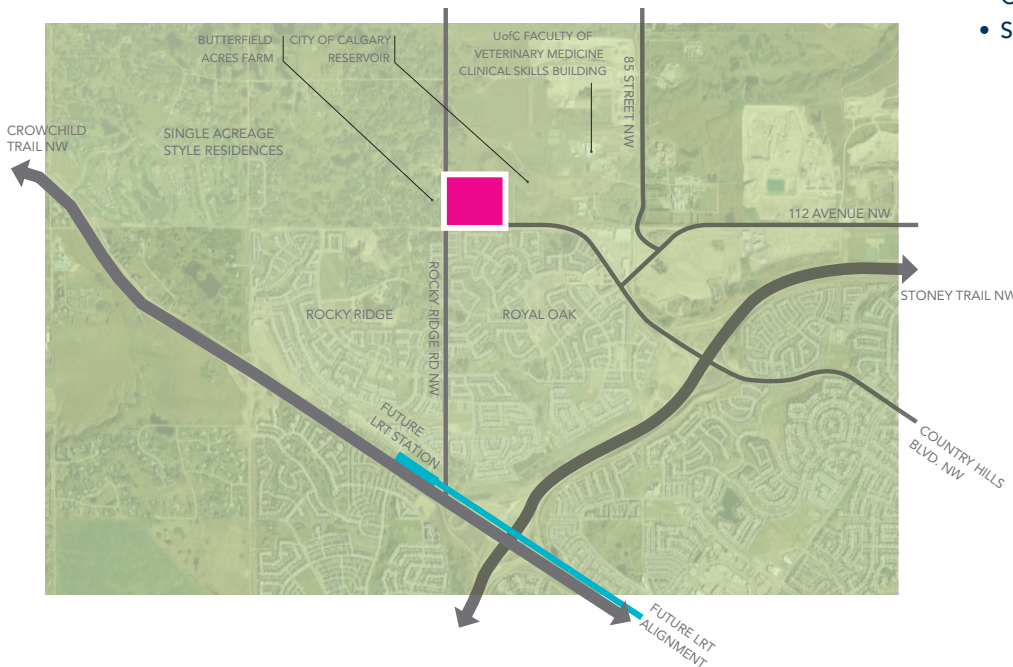
- Art making, studio and gallery space
- 300 seat theatre (approximate)

Retail/Commercial

- Daycare/child minding
- Food services
- Physiotherapy/medical clinic
- Pro shop

Outdoor Areas

- Basketball court
- Tennis court
- Pathways and nature trails/interpretative
- Children's play structures
- Skateboard park



- 64.5 acre (26.1 hectare)
- Estimated building size*: 300,000 sq. ft.
- * Dates and building size are approximate and subject to change.

For more information go to calgary.ca and search *New Recreation Centres*

calgary.ca | call 3-1-1